

# ARTURO FERRÉS

TRADUTOR PÚBLICO E INTÉRPRETE COMERCIAL

MATRÍCULA Nº 654 - JUCESP

RG nº 29.621.199-0 - CPF nº 116.347.278-60

CCM nº 2.940.845.8 - INSS nº 112.299.981-22

INGLÊS • FRANCÊS • ESPANHOL



Rua da Consolação, 331  
Conj. 412 - CEP 01301-000  
São Paulo, SP - Brasil  
Tel.: (11) 259-7848  
Fax: (11) 258-8750  
E-mail: mail@andrart.com  
www.andrart.com

Nº E-02515/02

1

*O abaixo assinado, Arturo Ferrés, Tradutor Público Juramentado, atesta que a tradução seguinte, de um documento que lhe foi apresentado em inglês, é fiel e correta.*

## MTC Trading Co. Inc.

Sala Nº 805, 8º andar  
Masse Higobashi Bldg. 3 Gokan  
23-13 Edobori 1-chome  
Nishi-ku, Osaka, 550-0002 Japão

### Endereço de correspondência:

Caixa Postal Central 1480  
Osaka, 530-8695, Japão

Tel: (06) 6225-5057  
Fax: (06) 6225-5058  
e-mail: mtc-inc@netnet.or.jp

07 de setembro de 2000

À

Takemura Cofres Limitada  
Rua Cunha Gago, 62 – São Paulo – SP  
CEP 05421-000, Brasil

A/c: Sr. K. Takemura

## Certificação de nossos Cofres


Atestamos pela presente que todos os cofres da MTC cumprem a rígida Norma Industrial Japonesa (JIS) de resistência ao calor e teste combinado de risco de explosão-impacto de acordo com as disposições da JIS-S-1037 sobre inspeção de segurança de resistência ao fogo. Portanto, garantimos sua boa qualidade e segurança.

Estamos exportando nossos cofres para a Europa (Suíça, Alemanha, França, Itália, Áustria e Dinamarca), Austrália, Taiwan, Chile (Marinha chilena) há muito tempo e no mercado nacional japonês vendemos para a NEC, NTT e Fujitsu.

Atenciosamente,

Pela MTC Trading Co. Inc.  
(a.) Y. Kawatani, Diretor

*Nada mais. Conferi e achei conforme. Dou fé.  
São Paulo, em 14 de maio de 2002.*

  
**Arturo Ferrés**  
Tradutor Público Juramentado

**試 験 成 績 書**

T E S T                      R E P O R T

依頼者 住 所 茨城県久慈郡大子町大字矢田 3 3 6 番 1  
Applicante Address 336-1 Yata, Daigo-machi, kuji-gun, Ibaragi-pref.  
会社名又は団体名 株式会社 エーコーヤマダ  
Company name EIKO KOGYO CO.LTD.  
代 表 者 代表取締役 中 村 光 夫 殿  
Presidente: Mitsuo Nakamura

**耐火庫の耐火性能試験**

名 称

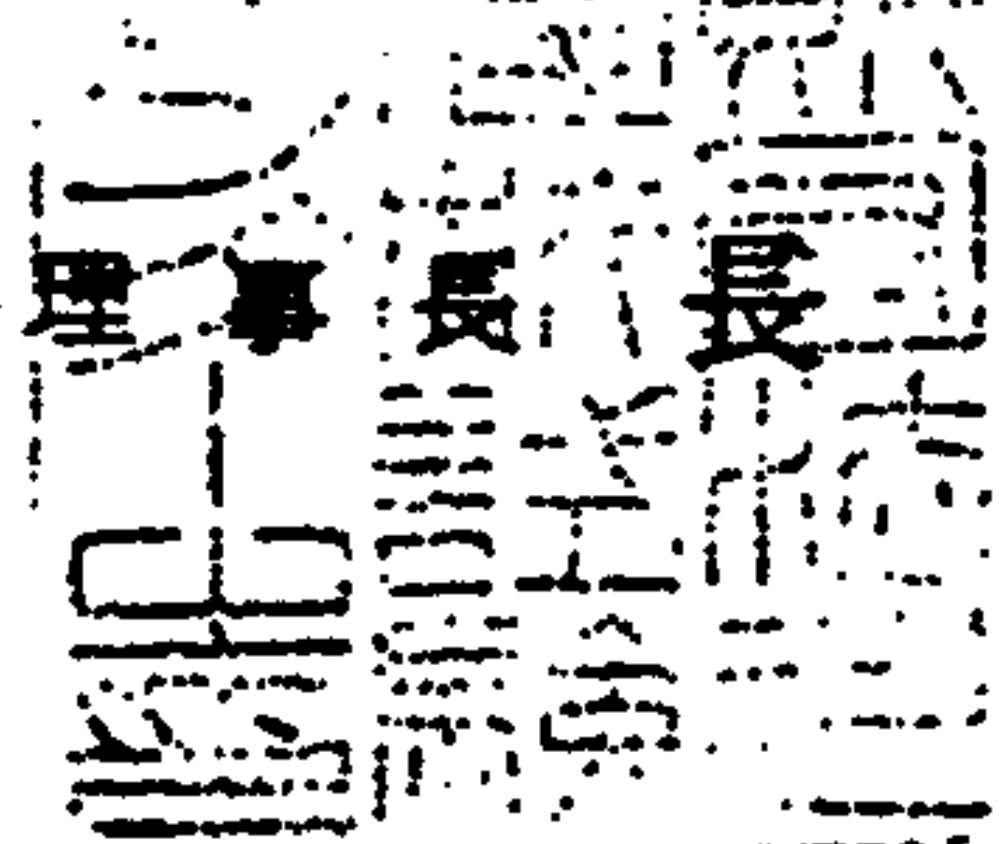
Designation of test: FIRE RESISTANCE TEST OF FIRE RESISTIVE SAFE MODEL SD

THIS TEST IS FOR : MODEL EC-4, EC-4E, MCD, CS-2, HM-4, HM-4E  
HM-5, HM-5E

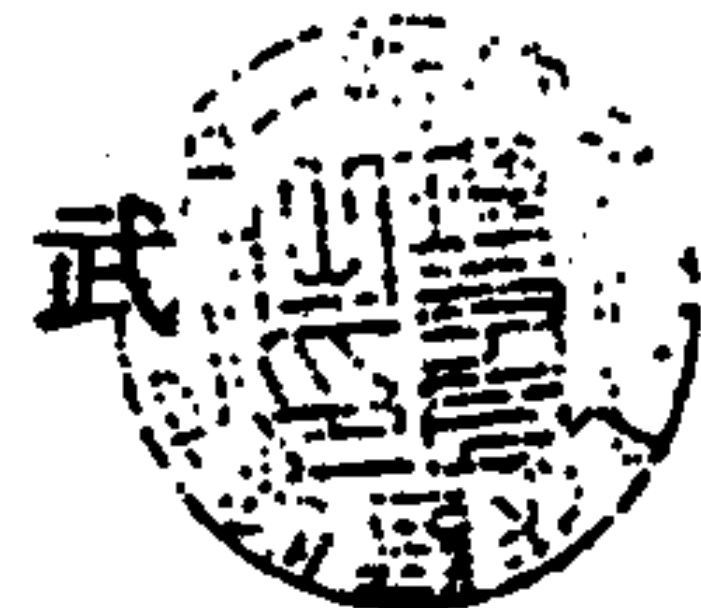
昭和59年11月7日付依頼された試験の結果はつぎのとおりである。  
The results of test requested on November 7, 1984 are, as per attached sheets.

December 19, 1984.  
昭和59年12月19日

JAPAN TESTING CENTER FOR CONSTRUCTION MATERIALS  
財団法人 建材試験センター



澤



Signed by

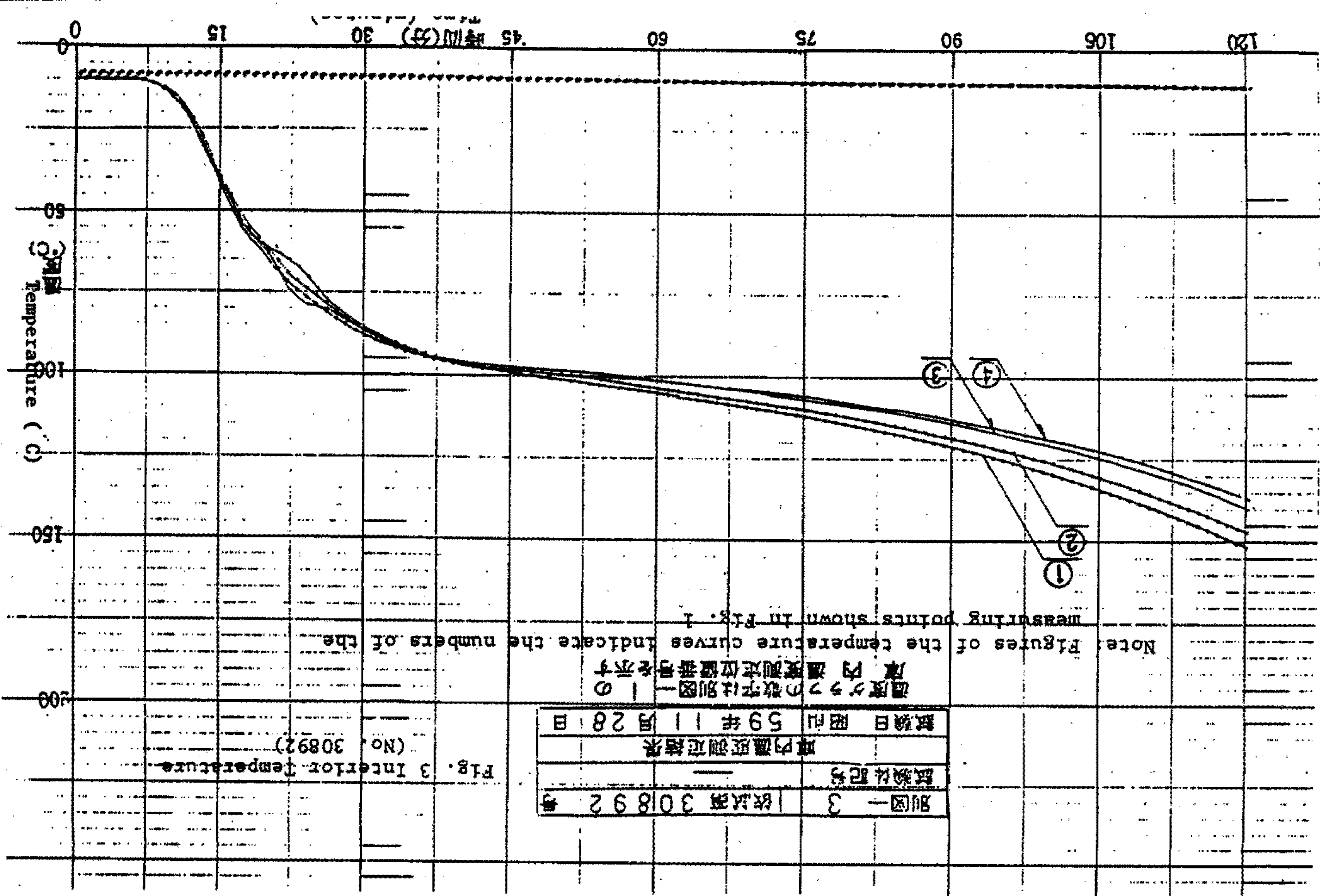
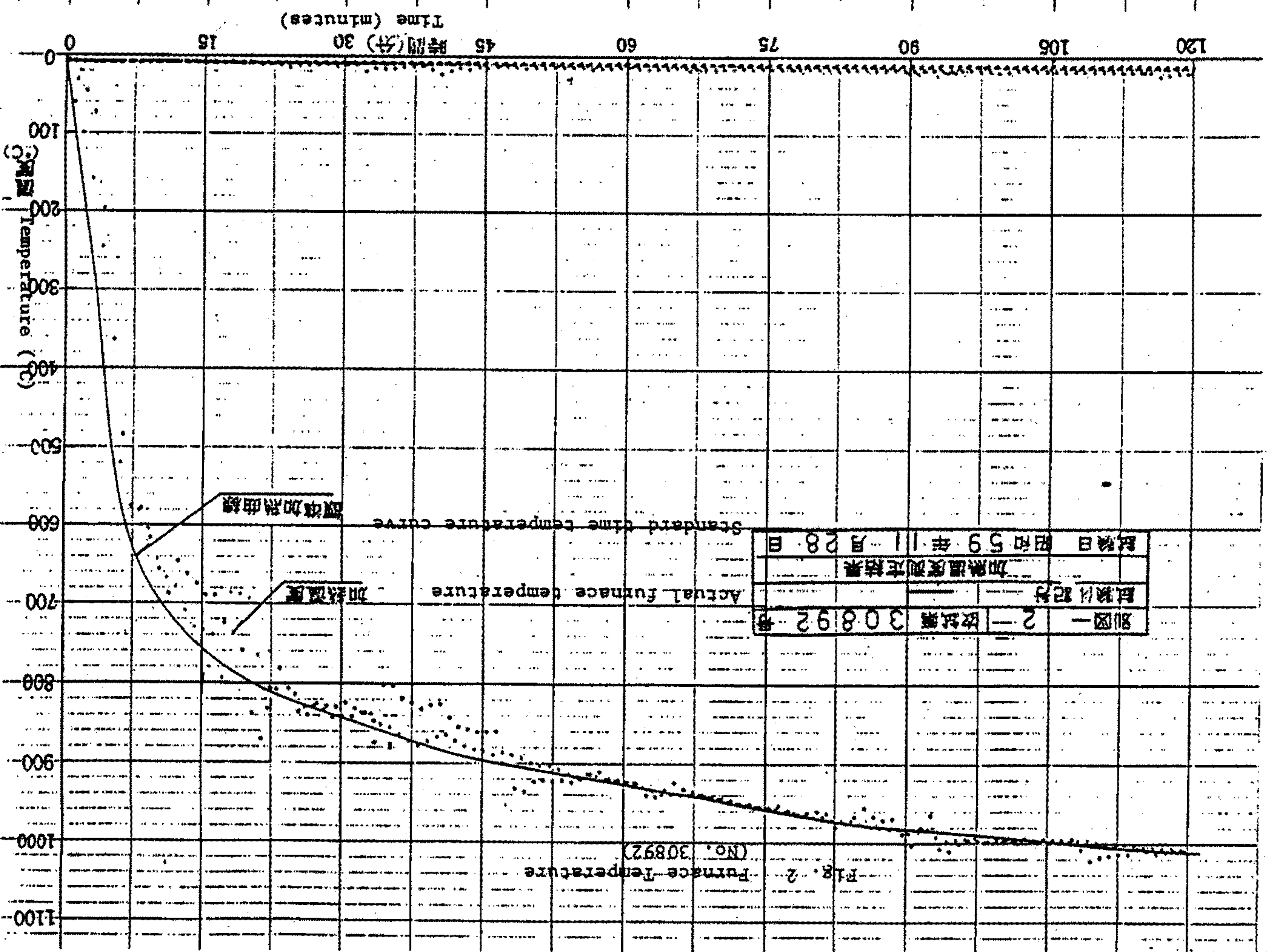
Takeshi Nagasawa  
General Director

DETAILS OF THE TEST REPORT

(Test No. 30892 )

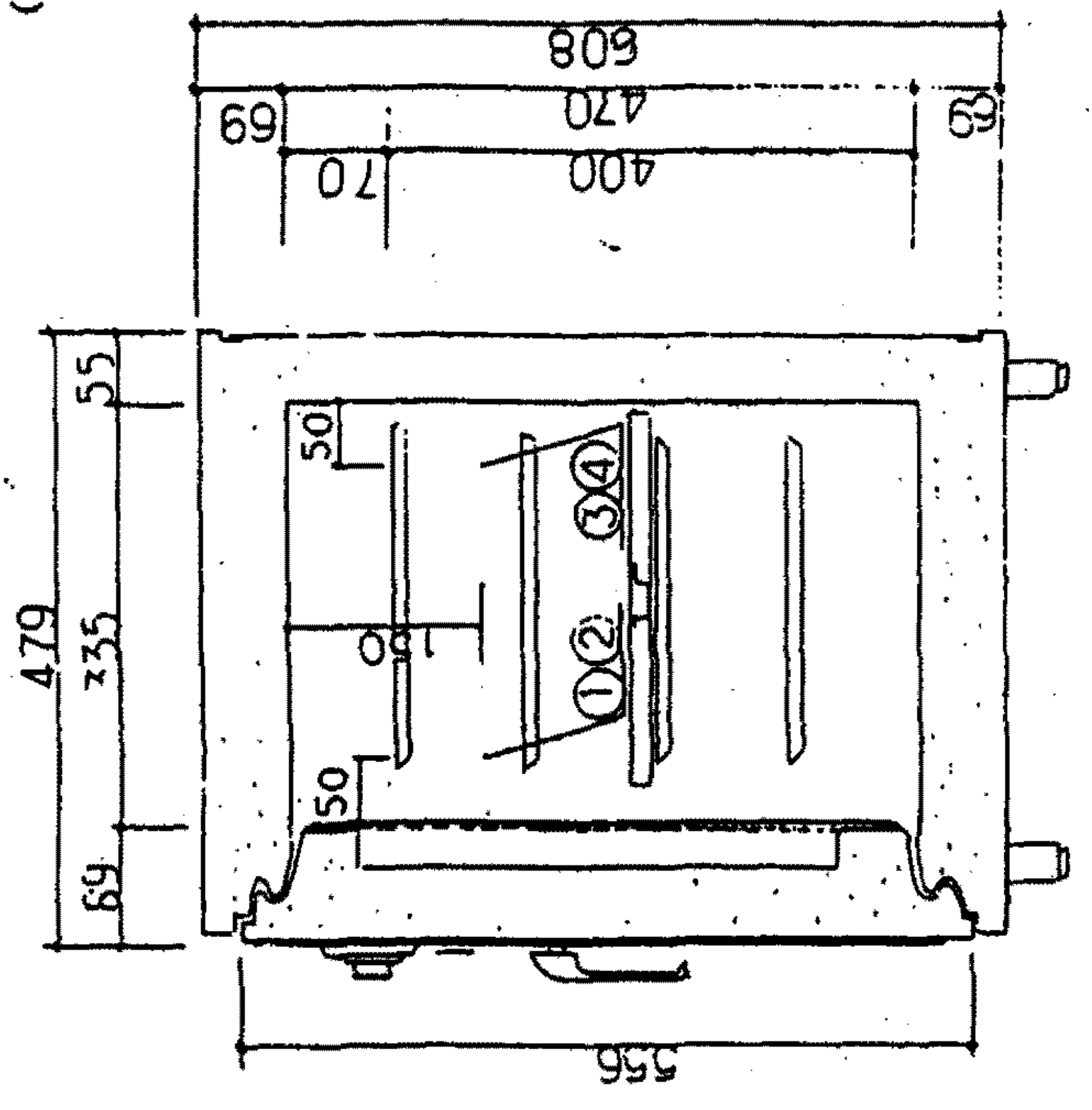
Client		Fire resistant safe		Type		With one door	
Kind		Two-hours Fire Endurance Test		Model		Model SD	
Classification		Two-hours Fire Endurance Test		Model		Model SD	
Dimension (mm)		Outer		Inner		Thickness each part (mm)	
Wide		463		325		Top (Steel Plate) outside 1.0 inside 1.0	
Deep		479		335		Side outside 1.0 inside 1.0	
High		608		470		Back outside 1.0 inside 1.0	
Height		665 mm		(including 57 mm of the diameter of caster)		Door outside 1.0 inside 1.0	
Weight		95 kgs.					
Name		Refractory concrete (cellular concrete)					
Density		0.54					
Moisture content		20.0 Zwt.					
Composition of materials		Normal portland cement, Aluminum powder set, Accelerating agent.					
Date materials filled in		October 20, 1984.					
Materials & Safe construction		As shown in Fig. 1					
Test requirements applied		In accordance with JIS S 1037 "Fire resistant safes"					
Type of testing furnace		Four side flaming for heating					
Heat Source		Light oil					
Heating temperature measuring points		As shown in Fig. 1					
Safe interior temperature measuring points		As shown in Fig. 1					

Test Results		Two-hours Fire Endurance Test			
Date of test made		November 28, 1984.			
Heating temperature		As shown in Fig. 2			
Safe interior temperature		As shown in Fig. 3			
Interior temperature		Measuring points		1 2 3 4 5	
Highest temperature °C		152 148 140 137 ---			
Observation made after test		Colour change of newspapers contained		None	
		Condition of lock fastening		Maintained	
		Explosion		None	
J U D G E M E N T		FULFILL			
Remarks		Personnel in Charge of Test		Yoshihiro Maekawa General Manager of Central Laboratory	
		Test by		Shachio Nakauchi Head of Fire Testing Section	
				Hitoshi Furusato Testing Engineer of Fire Testing Section	
				Nobuhiko Yamabe Testing Engineer of Fire Testing Section	
Period of Test		From: November 7, 1984. To : December 19, 1984.			
Place of Test		Central Laboratory of Japan Testing Center for Construction Materials			

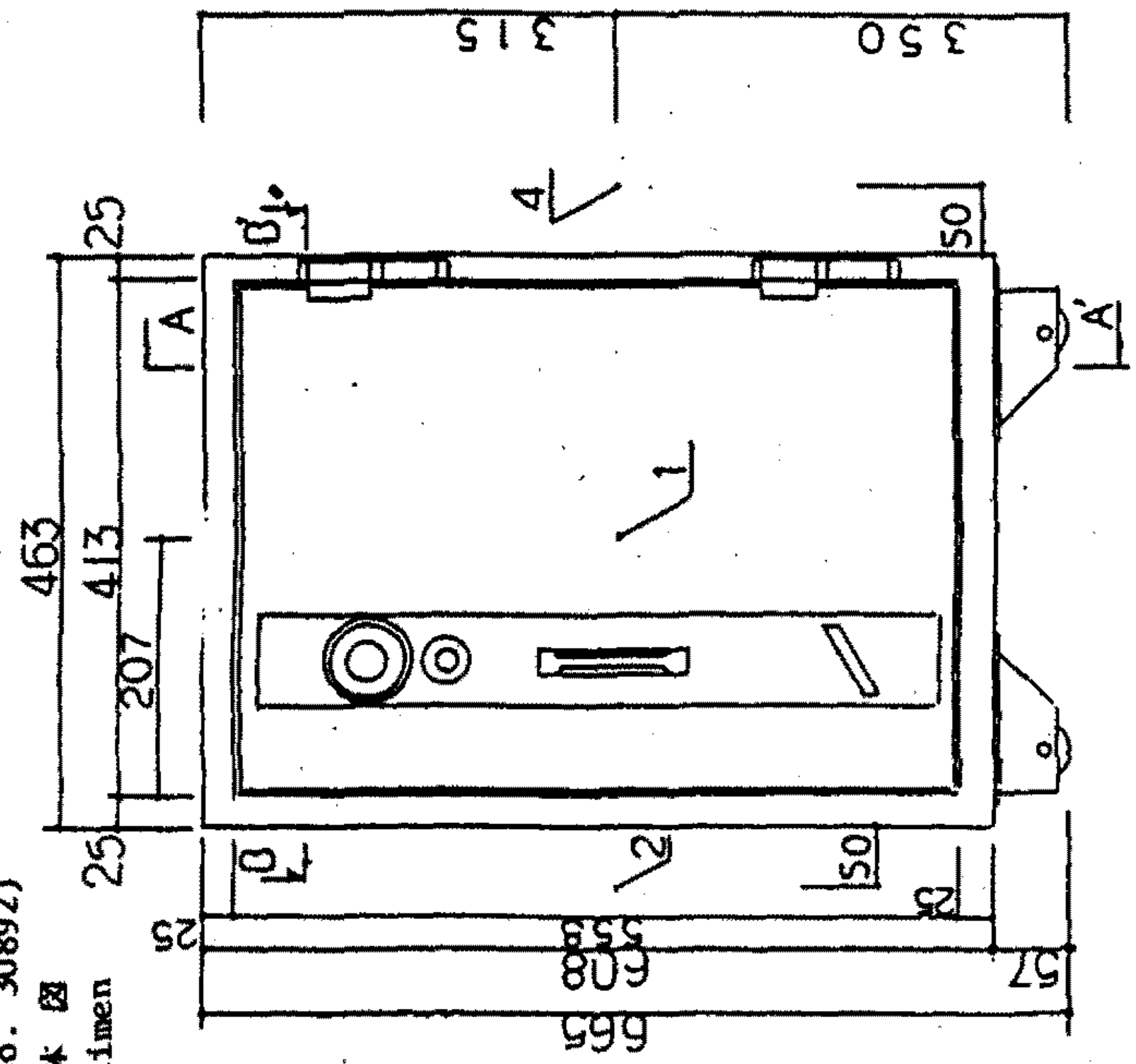


(表式第30892号) (No. 30892)  
 图-1 试象体图  
 Fig.-1 Test Specimen

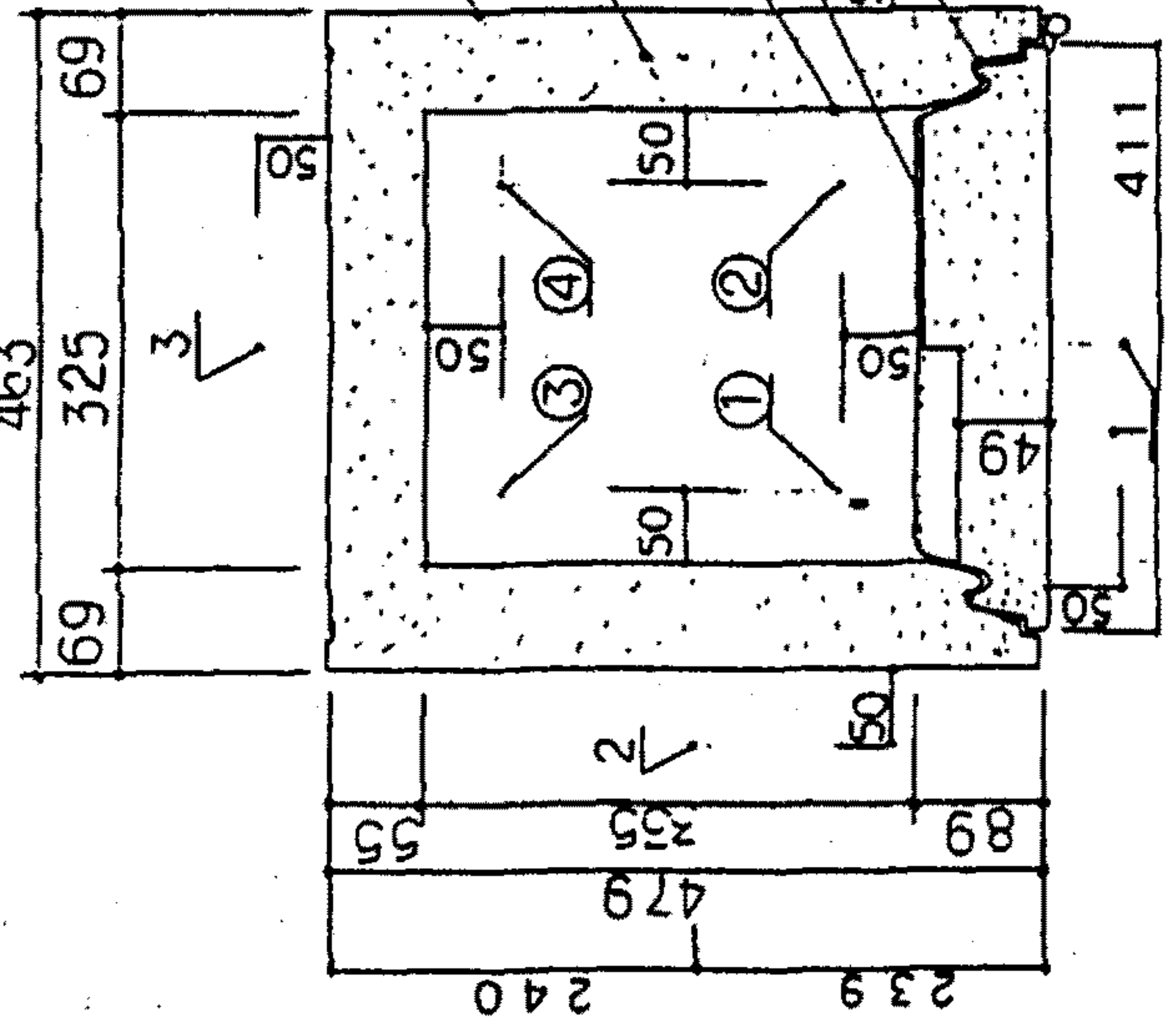
(UNIT: mm)



A-A'断面图 S:1/8  
 A-A' Cross sections: 1/8



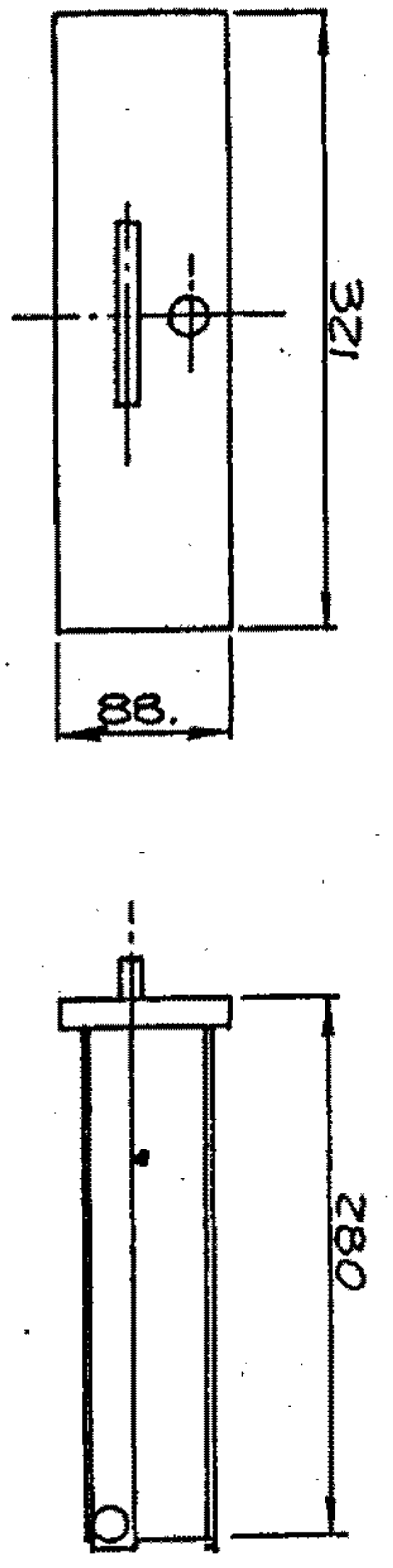
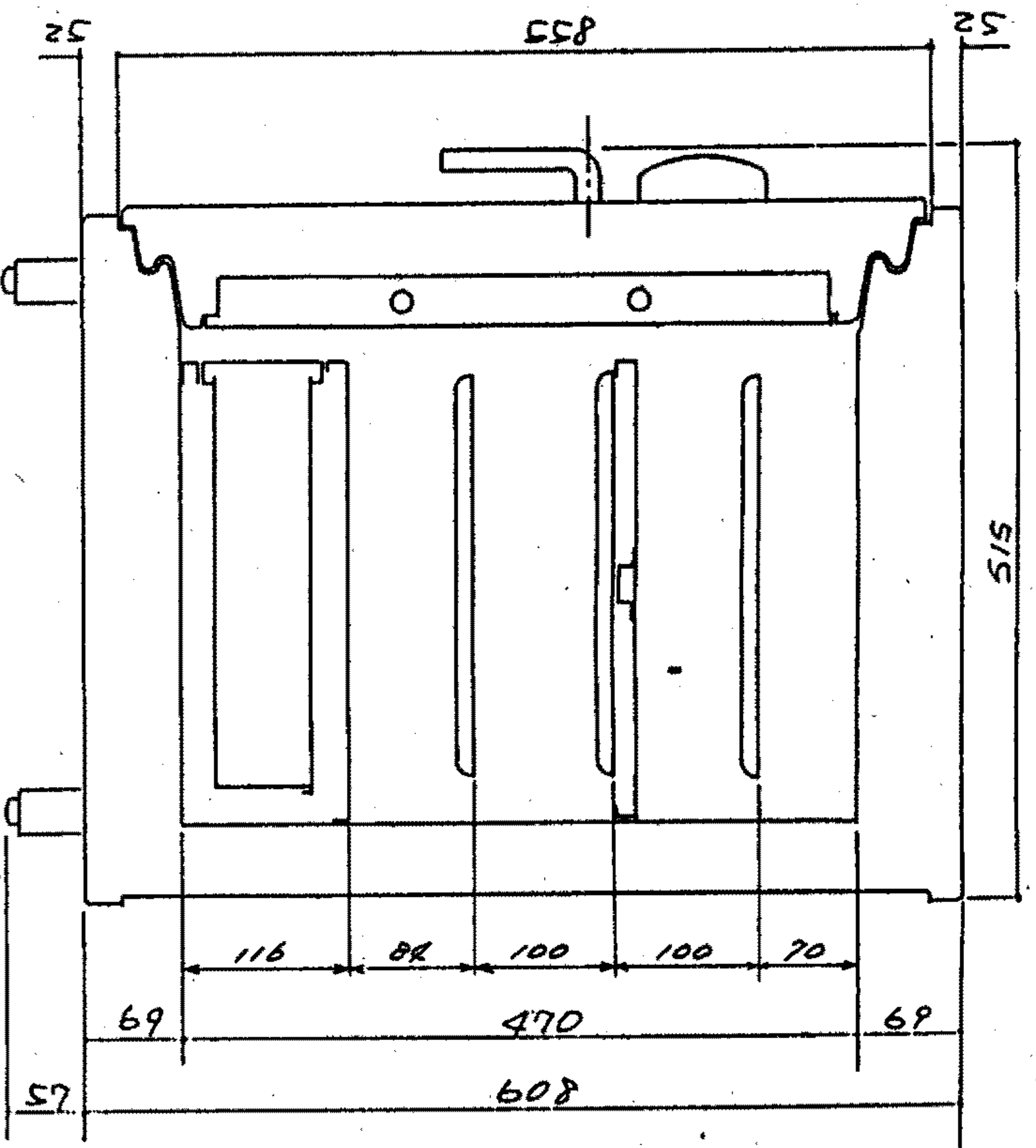
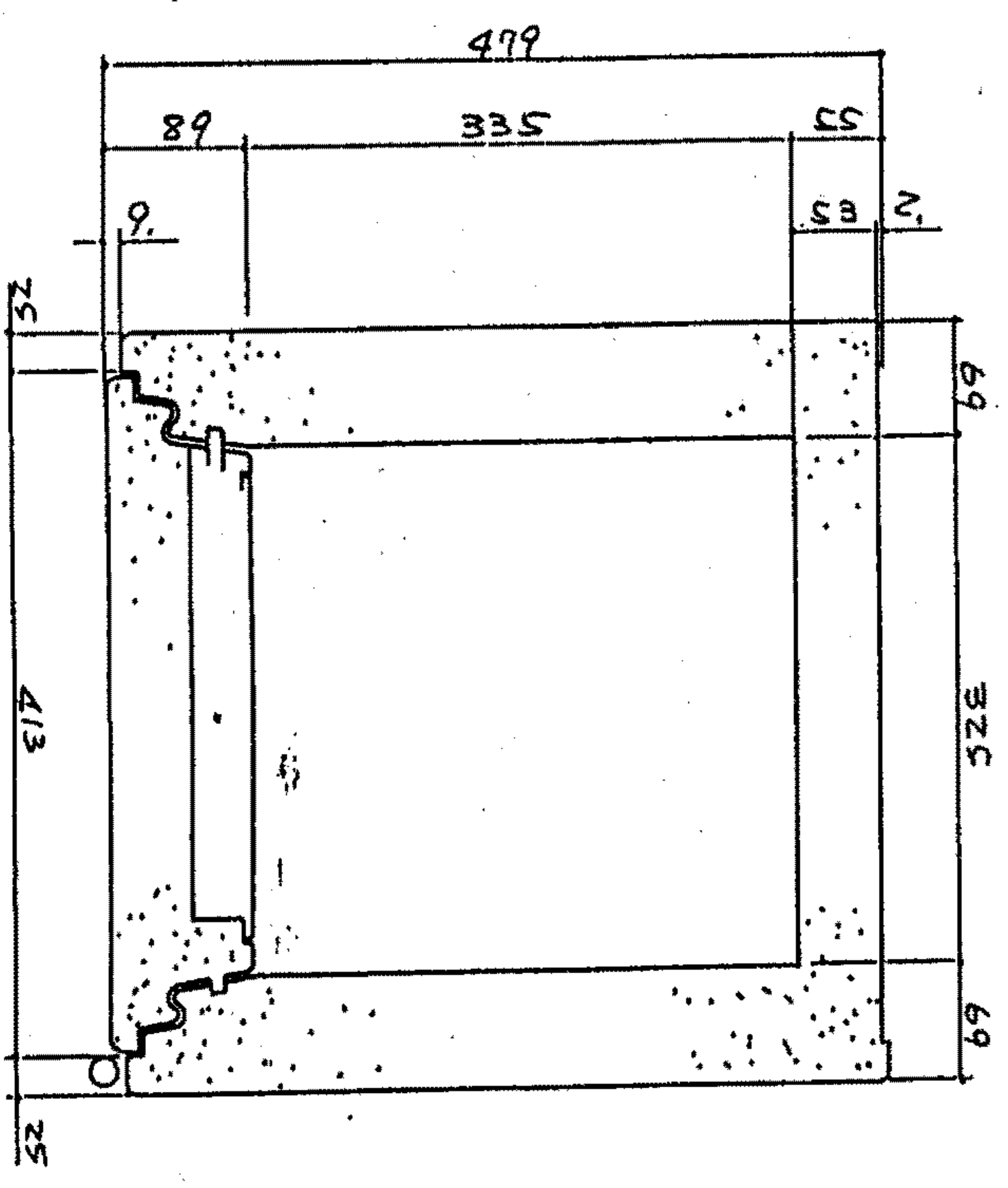
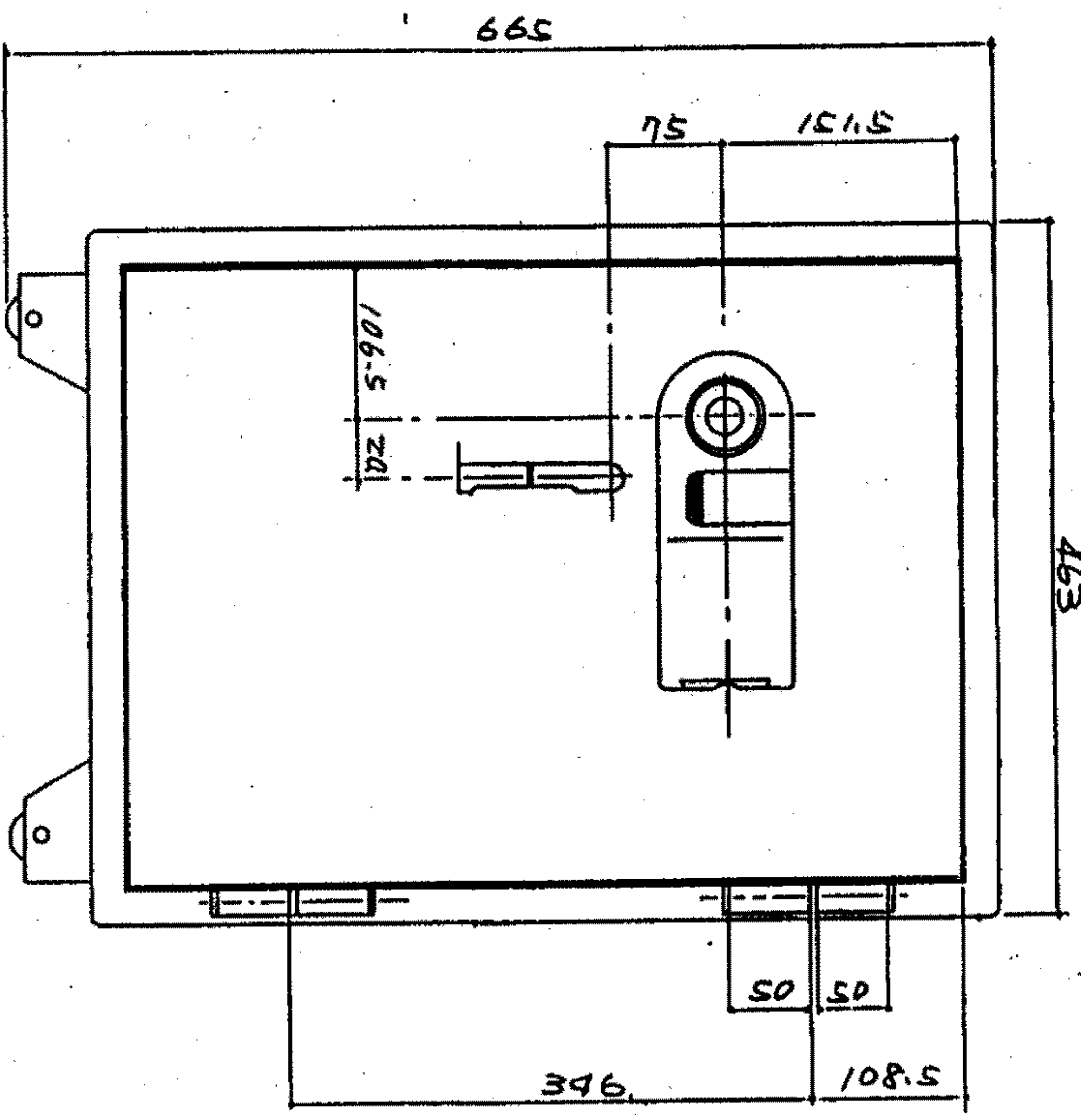
正面图 S:1/8  
 Front view S:1/8



B-B' Cross section S:1/8  
 B-B' 断面图 S:1/8

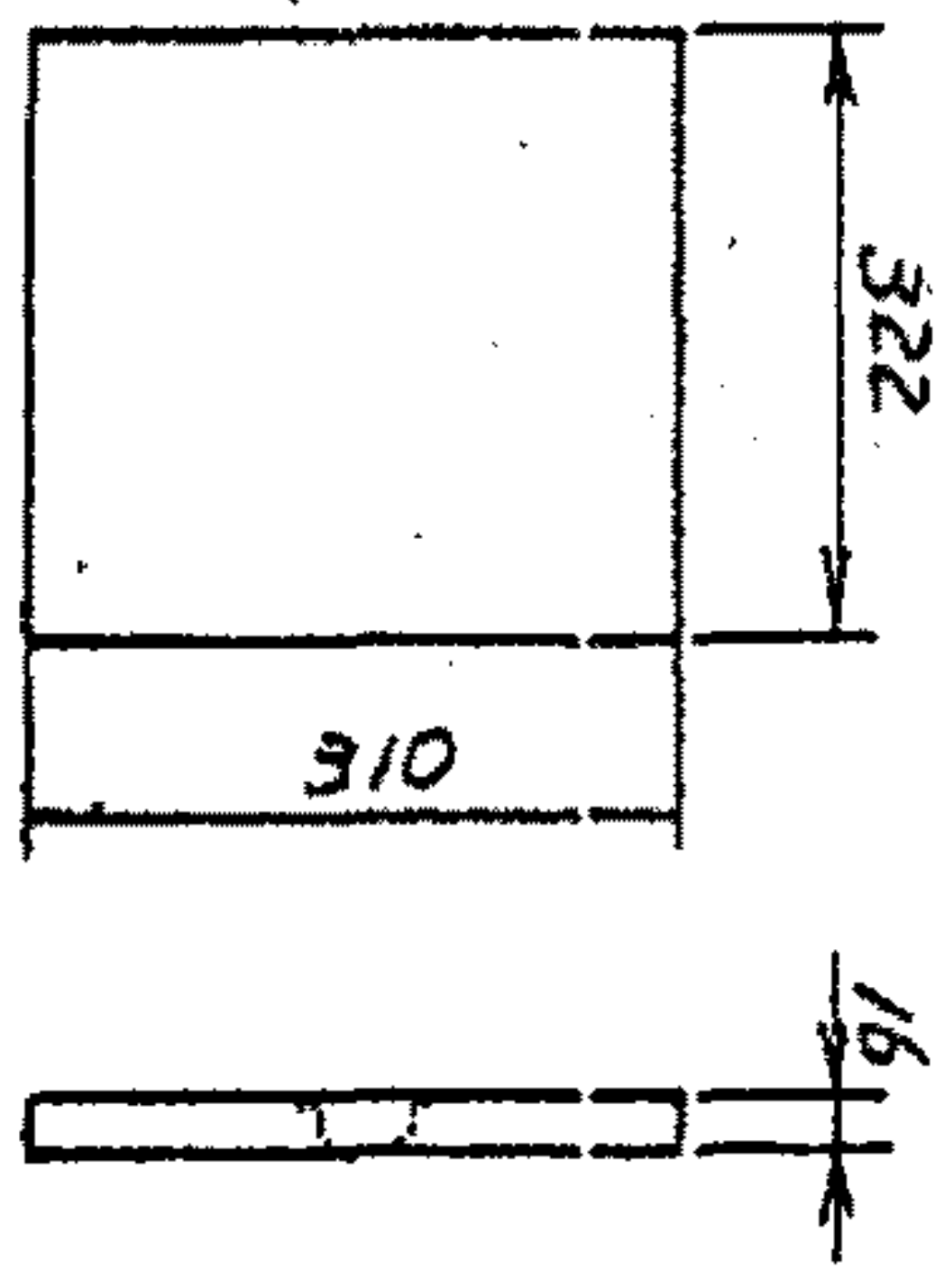
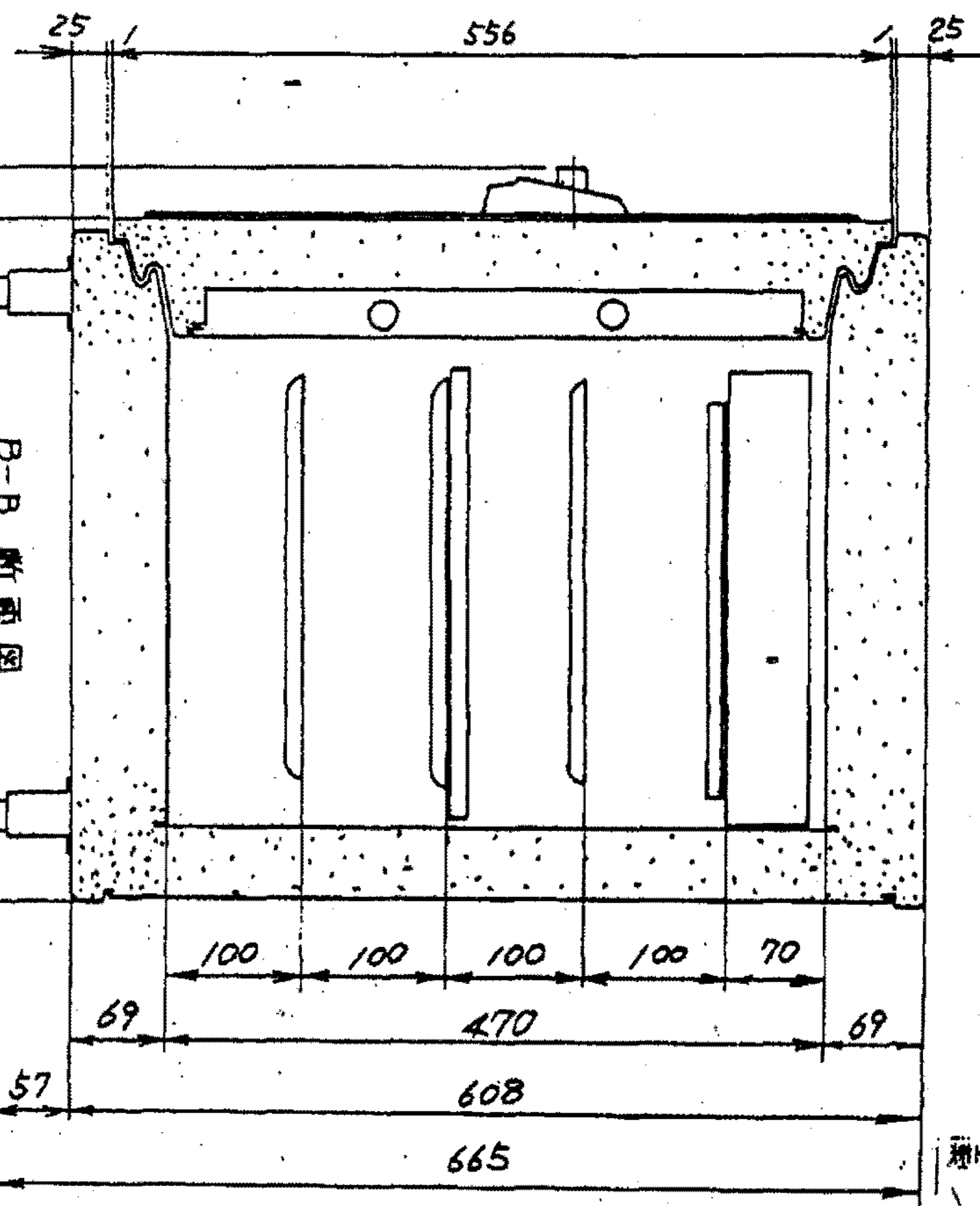
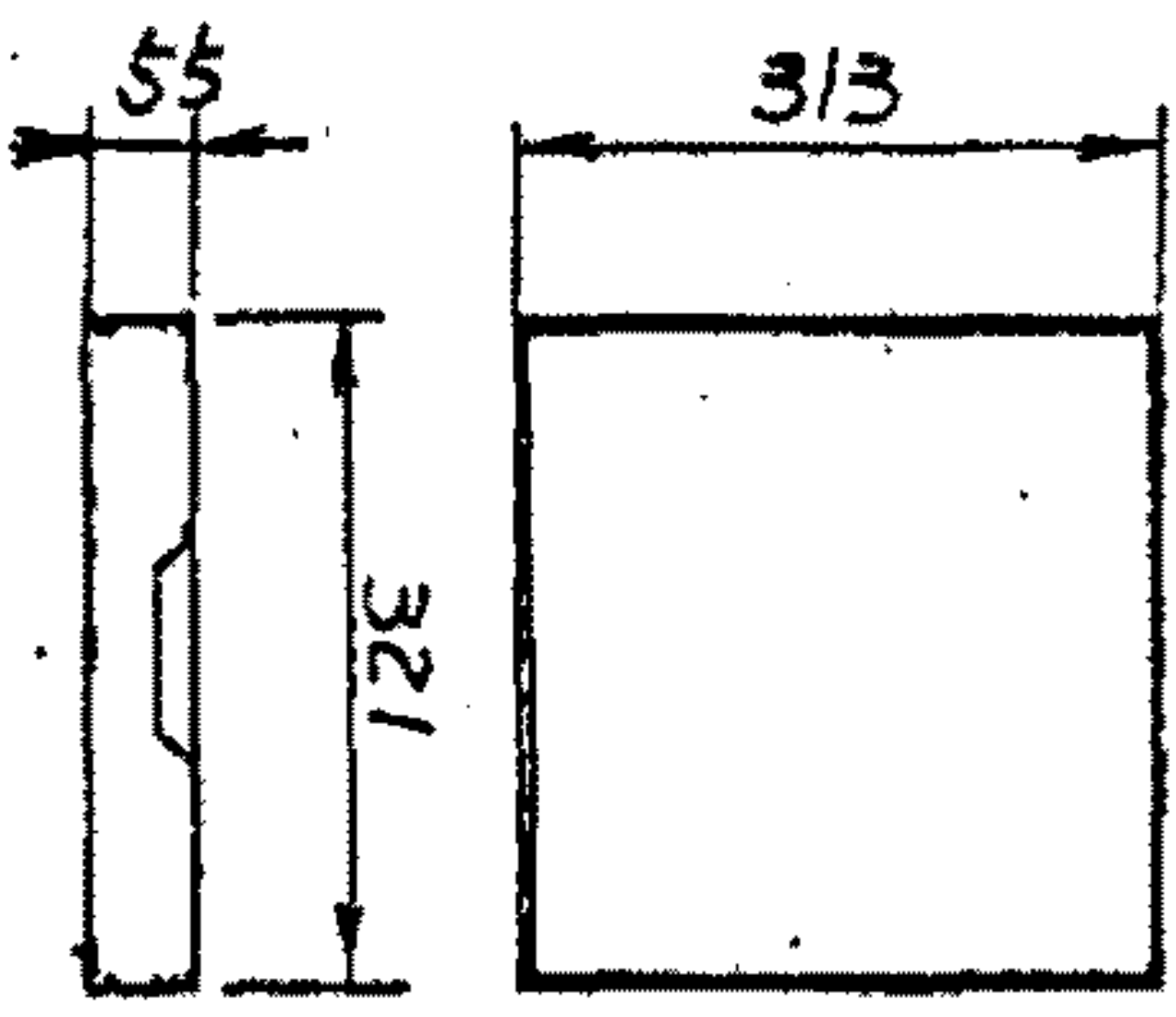
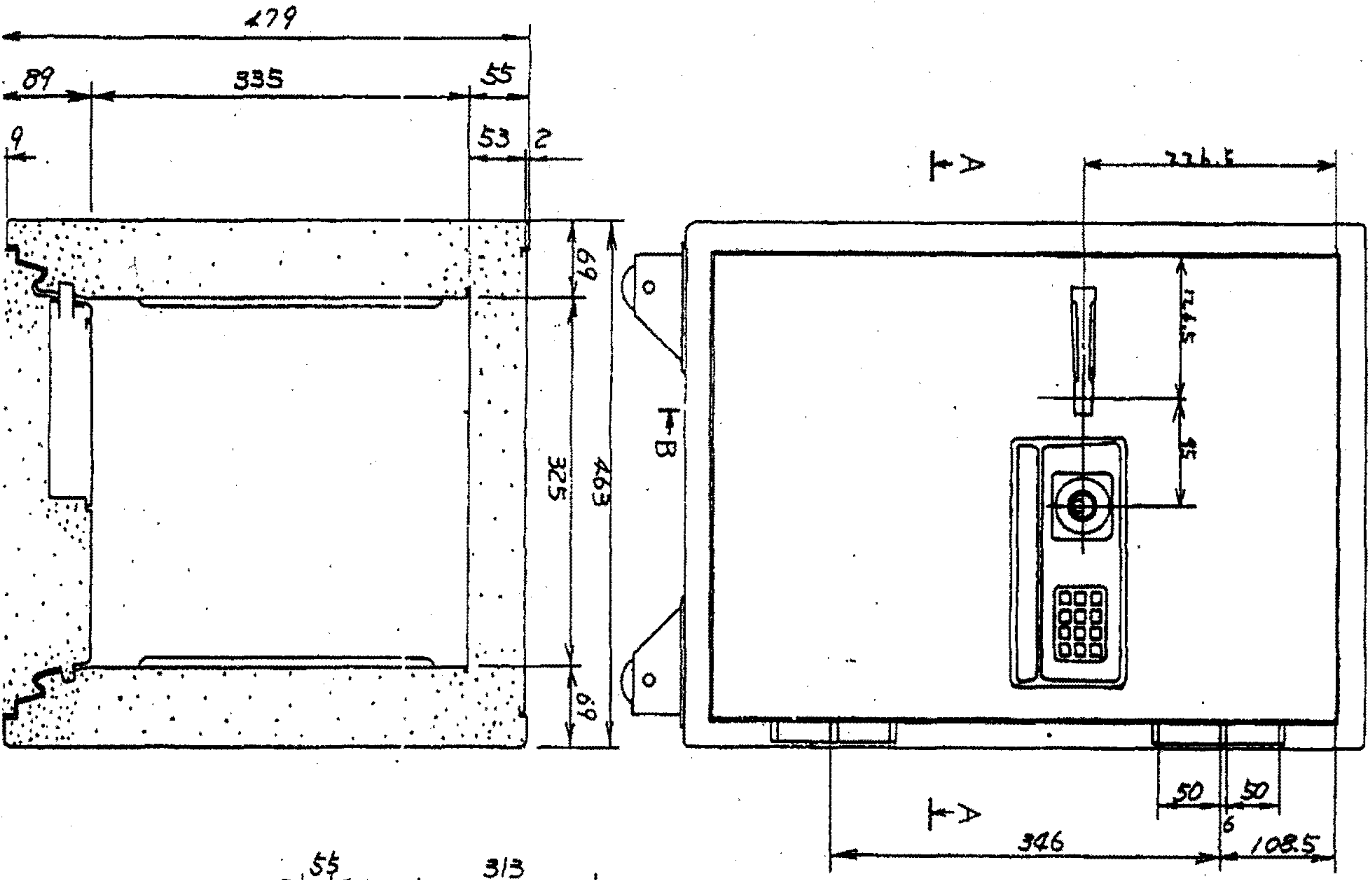
Outer casing (Steel sheet, 1.0 thick)  
 Fire resisting filler (Cellular concrete)  
 Inner casing (Steel sheet, 1.0 thick)  
 Alumina Ceramic Fibre Felt Board (5 thick)  
 Fibre glass (0.3 thick, 15 width)

凡例 LEGEND  
 1~4 Heating temperature measuring points  
 ①~④ Safe interior temperature measuring points



- 配本
1. 記入許容差以外ハ技術標準ニシテ
  - 2.
  - 3.
  - 4.
  - 5.

材質	年月日	製造	検査者	強度	尺	単位	第三角
Al				300以下=0.3	15	mm	MTC-D
Al				1000以下=0.5			
Al				1000以上=1.0			
昭和63年8月8日作成		検査					MTC耐火筒



规格 1/10

单位 mm

1. 本图除另有说明外，均按GB 19001.1-2001标准执行。  
2. 图中尺寸单位为mm。

图号	SDP (HM-4E)	图例	比例	1/5	材料	牙三角法
比例	1/5	数量	0.3	±0.5	±1.0	
材料	39031 F 100011 F 100017 F	规格	0.3	±0.5	±1.0	
图例		数量				
比例		材料				
图例		数量				
比例		材料				

No.